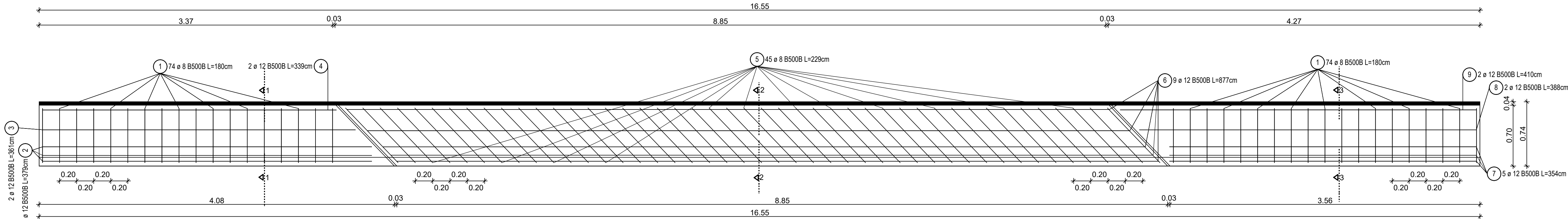
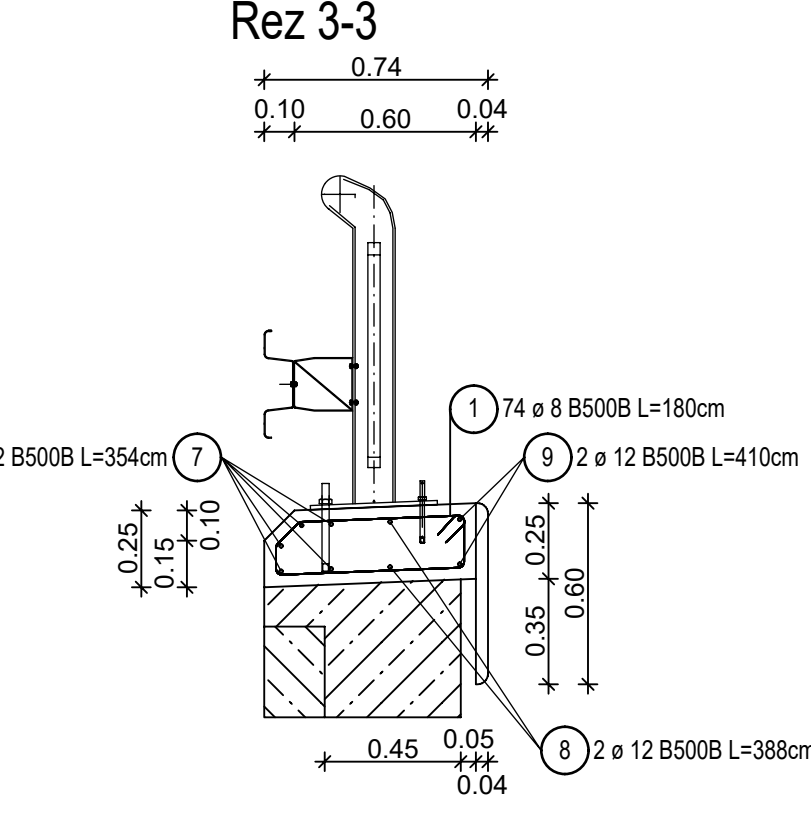
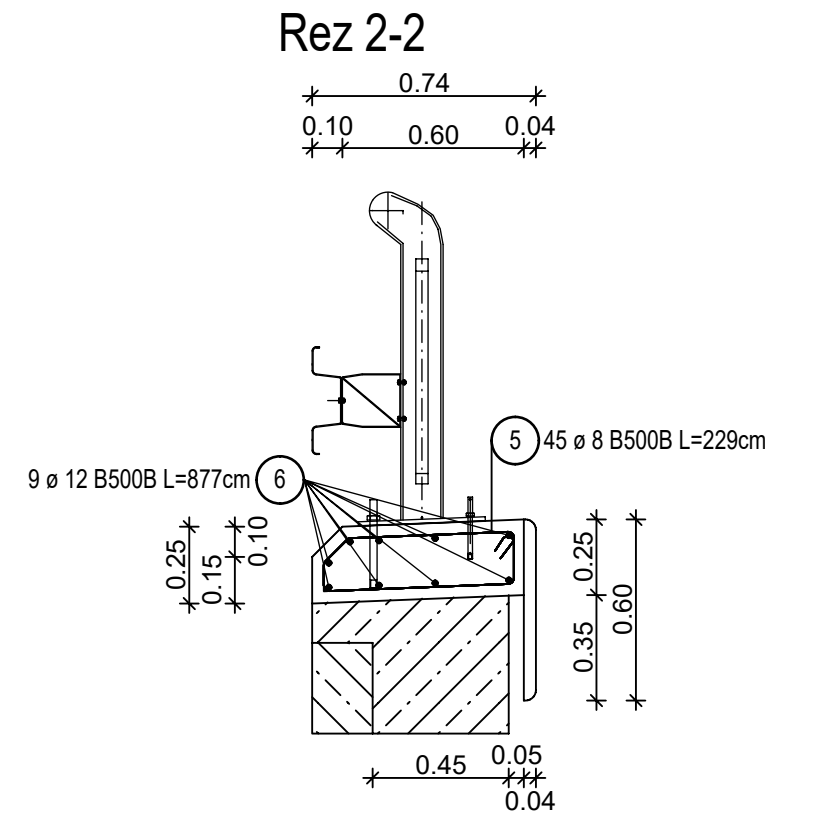
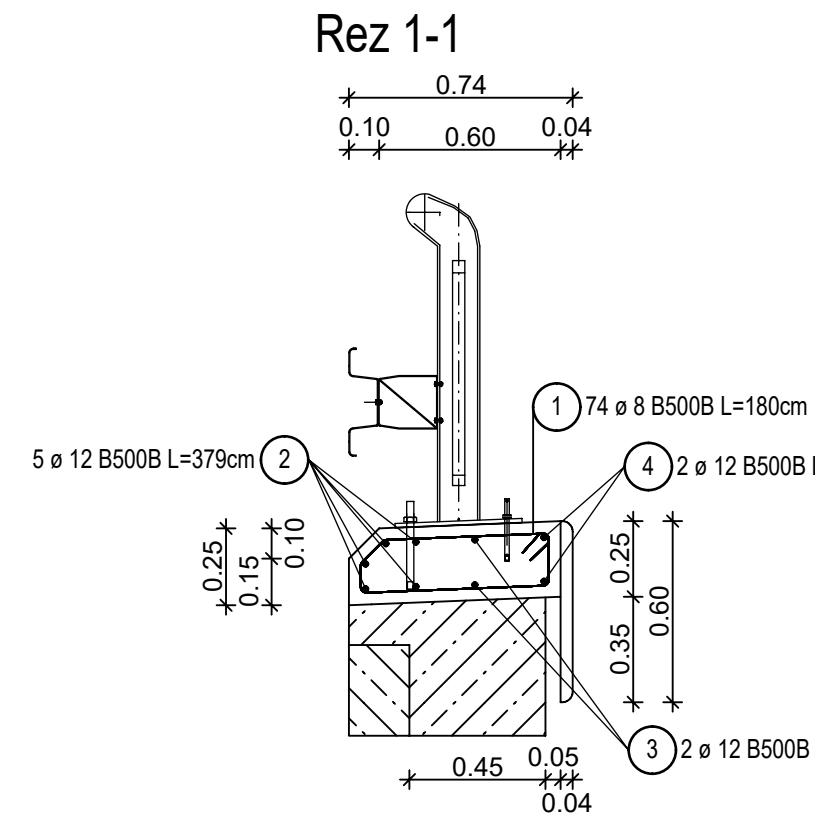
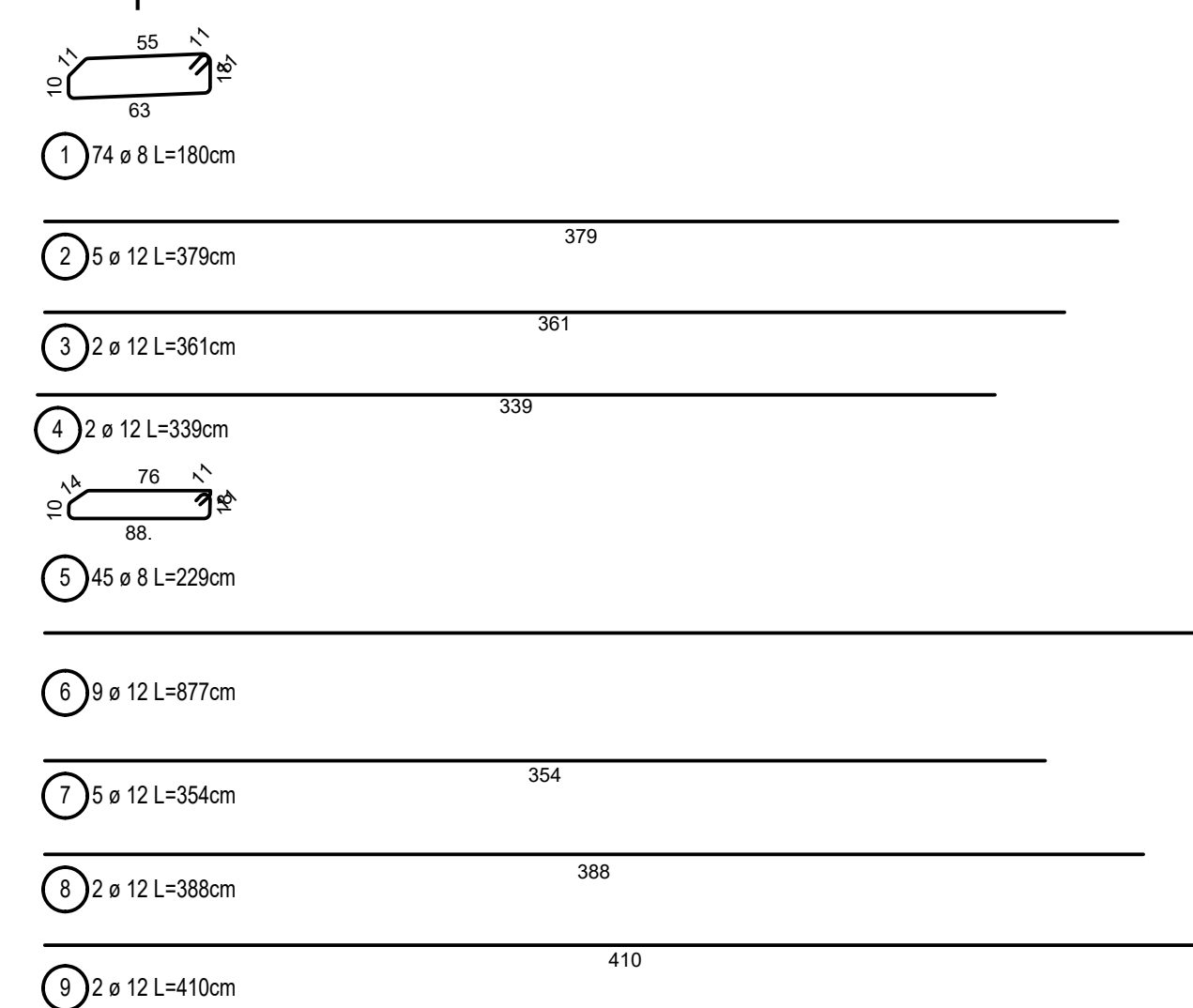


Výkres výstuže - most Kalinka ev.č. 2463-8
M1:25
Římsa mosta č.1

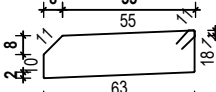


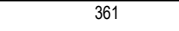
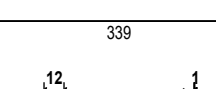


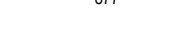
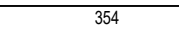


Tvar prútov:

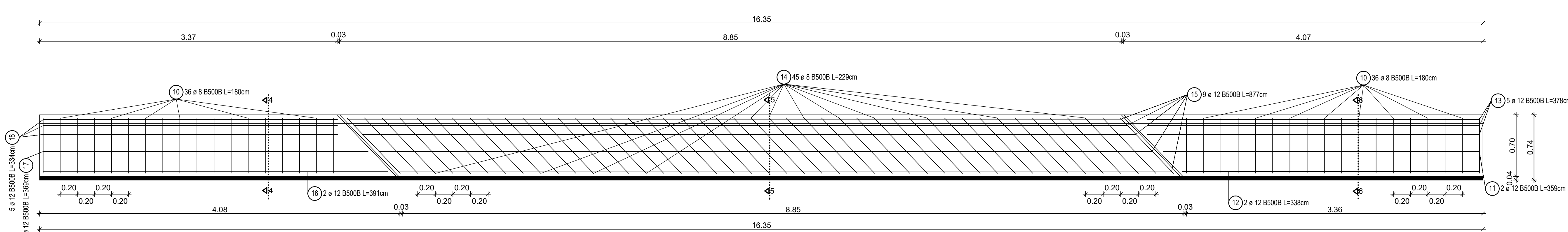


VÝPIS PRÚTOV A SIETÍ - RÍMSA č.1

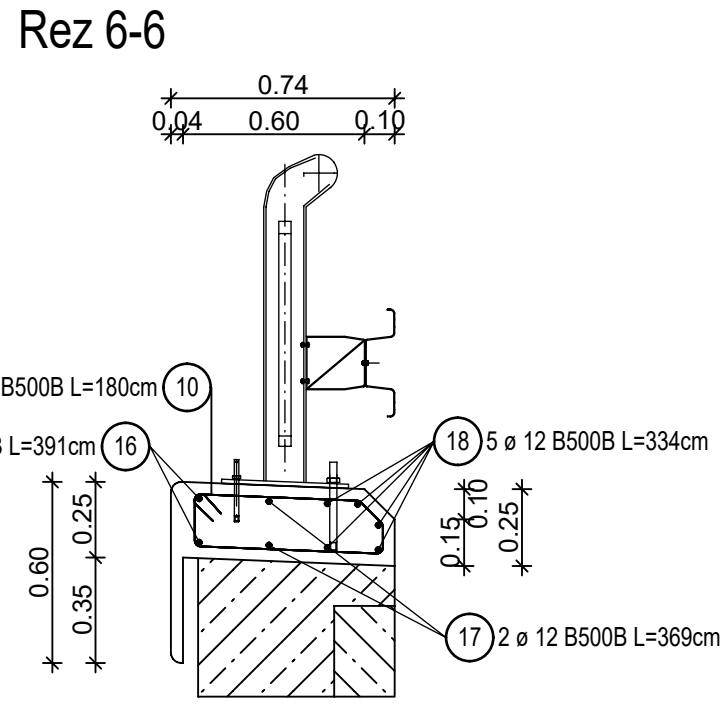
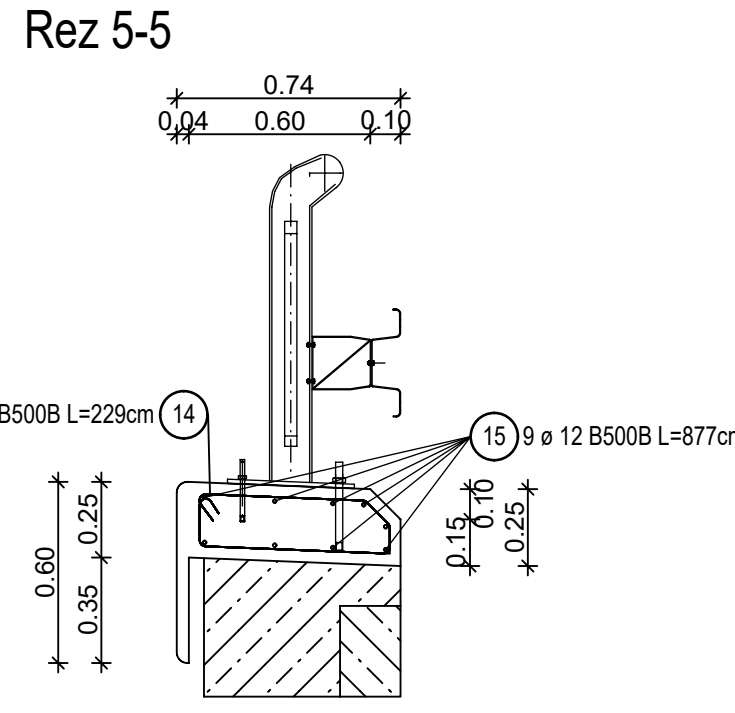
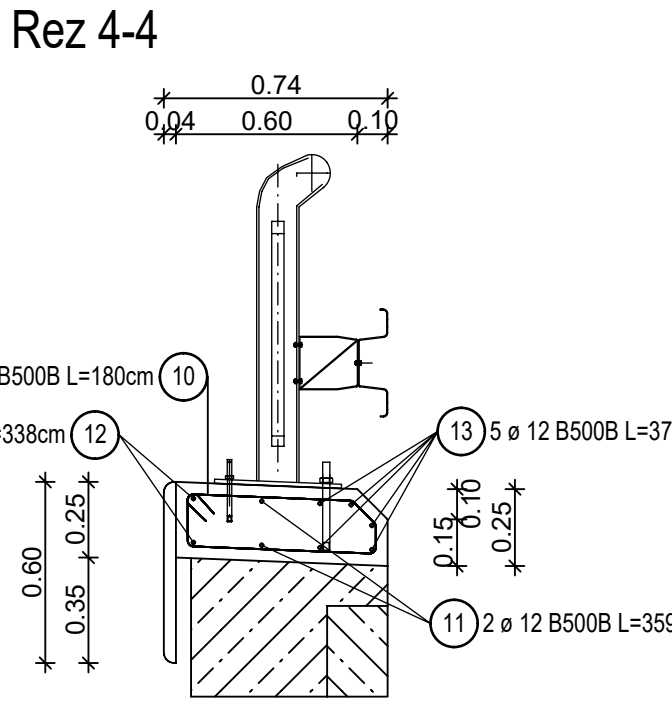
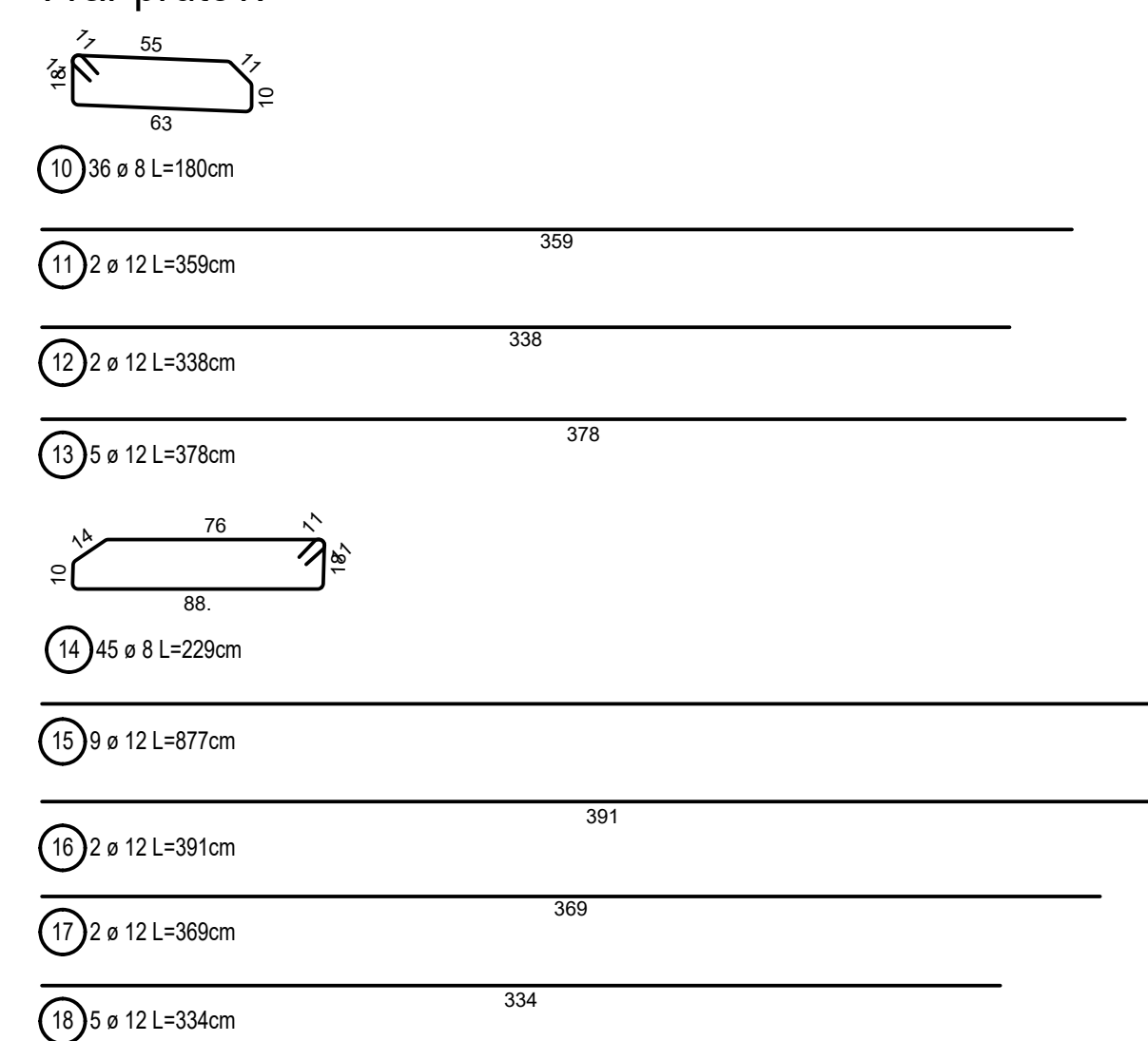
POL.	0 PRUTU 1,1111111111111111	DLKJA (m)	SRKA (m)	PLKJA (m)	KS	DLKJA-PLKJA CELKOST (m)	HMDTOST (m)	HMDTOST (m)
000	0	0	0	0	0	0	0	0
1	8	1,90			74	133,20	0,395	52,63
2	12	3,99			5	18,95	0,088	16,81
3	12	3,81			7	7,22	0,088	6,44
4	12	3,39			2	6,78	0,088	6,62
5	8	2,29			45	103,05	0,395	40,70
6	12	3,77			7	7,65	0,088	70,10
7	12	3,54			5	17,70	0,088	15,72
8	12	3,88			2	7,76	0,088	6,69
9	12	4,50			2	8,00	0,088	7,28
000	CELKOST B4500							222,56
000	HMDTOST VYSTUJE CELKOST (kg)							222,56

Výkaz výstuže vrátane tvaru prútov - Rimsa č.1						
Pol.	Ka	Š	Jednot. dĺžka [m]	Tvar prúta s popisom (bez značky)	Celková dĺžka [m]	Hmotnosť [kg]
1	74	8	1.80		133.20	52.61
2	5	12	3.79		18.95	16.83
3	2	12	3.61		7.22	6.41
4	2	12	3.39		6.78	6.02
5	45	8	2.29		103.05	40.70
6	9	12	6.77		78.93	70.09
7	5	12	3.54		17.10	15.72
8	2	12	3.88		7.76	6.89
9	2	12	4.10		8.20	7.28
Celková hmotnosť: [kg]						

Rímsa mosta č.2



Tvar prútov:

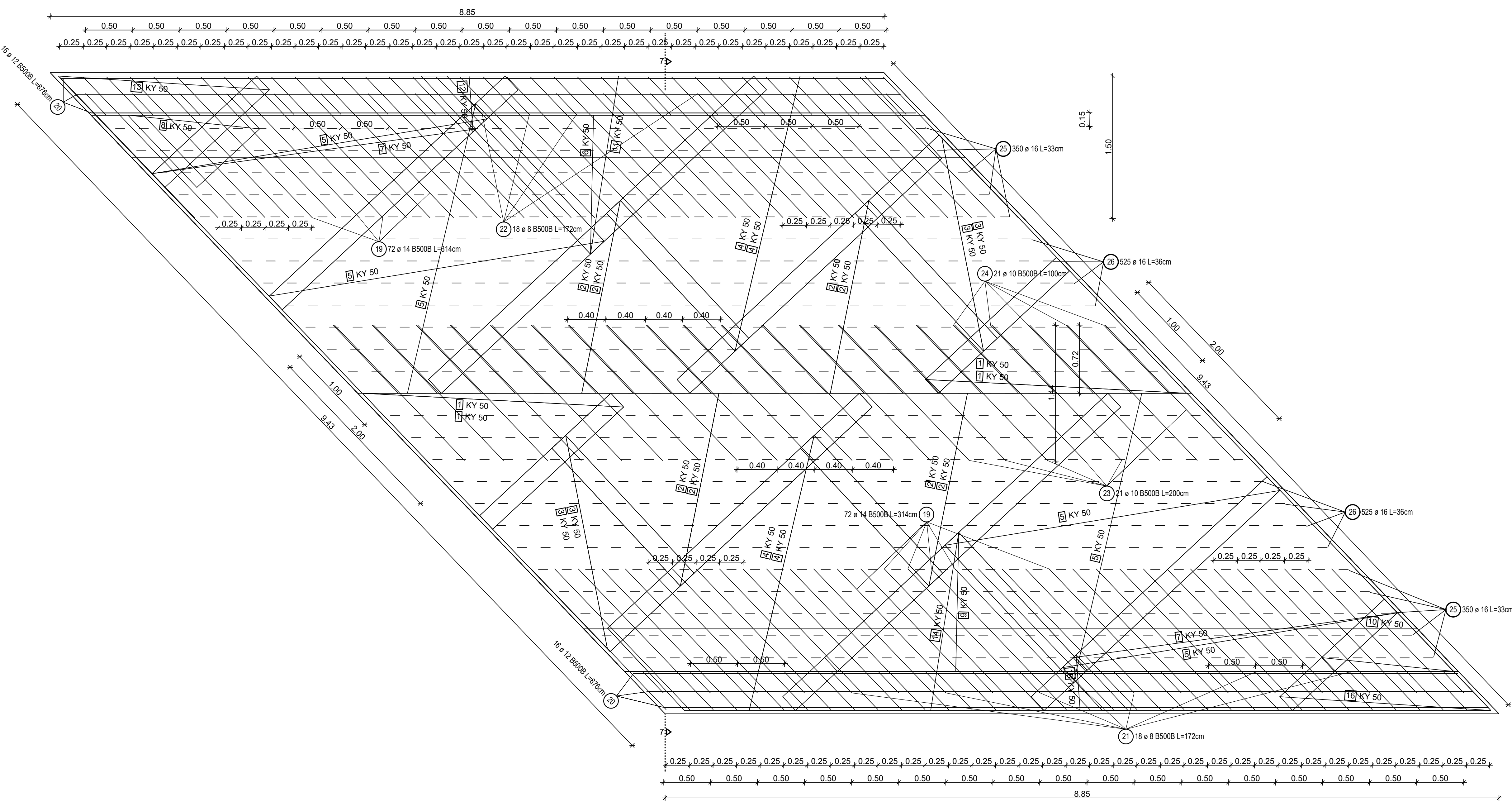


VÝPIS PRÚTOV A SIETÍ - RÍMSA č.2

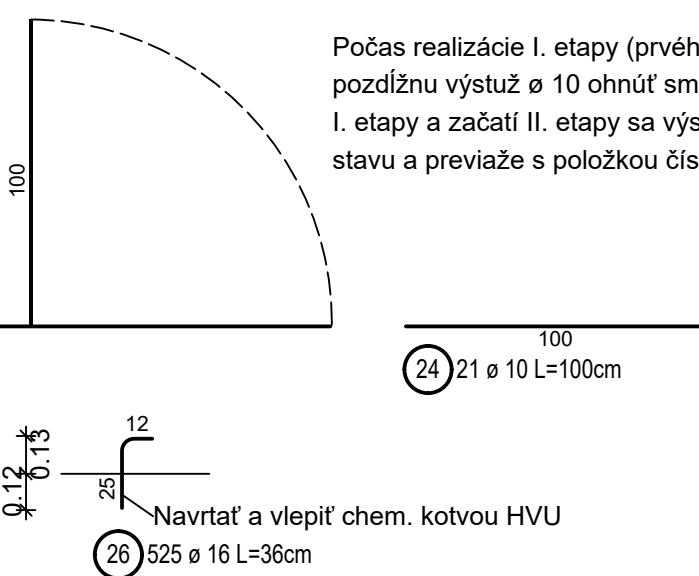
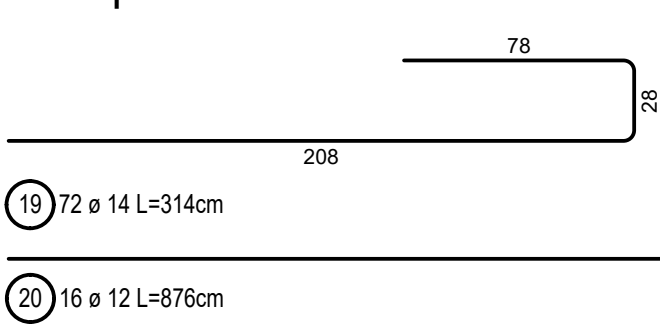
[illegible][illegible]

Výkaz výstuže vrátane tvaru prútov - Rímsa č.2

Dobetonávka + Nosník N1



Tvar prútov:



VÝPIS PRÚTOV A SIETÍ - DOBETONÁVKA + N1

DOE	IP (W/m ²)	U ₁₃	BRCH	PROCH	DOE	IP (W/m ²)	U ₁₃	BRCH	PROCH
DOE	IP (W/m ²)	U ₁₃	BRCH	PROCH	DOE	IP (W/m ²)	U ₁₃	BRCH	PROCH
1	0.00	1.981	2.000	3.660	4	16.44	5.460	83.15	
2	0.00	2.729	2.000	5.560	8	44.64	5.460	240.87	
3	0.00	3.477	2.000	7.460	12	72.84	5.460	412.41	
4	0.00	4.225	2.000	9.360	16	101.04	5.460	583.95	
5	0.00	4.973	2.000	11.260	20	129.24	5.460	755.49	
6	0.00	5.721	2.000	13.160	24	157.44	5.460	927.03	
7	0.00	6.469	2.000	15.060	28	185.64	5.460	1098.57	
8	0.00	7.217	2.000	16.960	32	213.84	5.460	1270.11	
9	0.00	7.965	2.000	18.860	36	242.04	5.460	1441.65	
10	0.00	8.713	2.000	20.760	40	270.24	5.460	1613.19	
11	0.00	9.461	2.000	22.660	44	298.44	5.460	1784.73	
12	0.00	10.209	2.000	24.560	48	326.64	5.460	1956.27	
13	0.00	10.957	2.000	26.460	52	354.84	5.460	2127.81	
14	0.00	11.705	2.000	28.360	56	383.04	5.460	2299.35	
15	0.00	12.453	2.000	30.260	60	411.24	5.460	2470.89	
16	0.00	13.201	2.000	32.160	64	439.44	5.460	2642.43	
17	0.00	13.949	2.000	34.060	68	467.64	5.460	2813.97	
18	0.00	14.697	2.000	35.960	72	495.84	5.460	2985.51	
19	0.00	15.445	2.000	37.860	76	524.04	5.460	3157.05	
20	0.00	16.193	2.000	39.760	80	552.24	5.460	3328.59	
21	0.00	16.941	2.000	41.660	84	580.44	5.460	3500.13	
22	0.00	17.689	2.000	43.560	88	608.64	5.460	3671.67	
23	0.00	18.437	2.000	45.460	92	636.84	5.460	3843.21	
24	0.00	19.185	2.000	47.360	96	665.04	5.460	4014.75	
25	0.00	19.933	2.000	49.260	100	693.24	5.460	4186.29	
26	0.00	20.681	2.000	51.160	104	721.44	5.460	4357.83	
27	0.00	21.429	2.000	53.060	108	749.64	5.460	4529.37	
28	0.00	22.177	2.000	54.960	112	777.84	5.460	4700.91	
29	0.00	22.925	2.000	56.860	116	806.04	5.460	4872.45	
30	0.00	23.673	2.000	58.760	120	834.24	5.460	5043.99	
31	0.00	24.421	2.000	60.660	124	862.44	5.460	5215.53	
32	0.00	25.169	2.000	62.560	128	890.64	5.460	5387.07	
33	0.00	25.917	2.000	64.460	132	918.84	5.460	5558.61	
34	0.00	26.665	2.000	66.360	136	947.04	5.460	5730.15	
35	0.00	27.413	2.000	68.260	140	975.24	5.460	5901.69	
36	0.00	28.161	2.000	70.160	144	1003.44	5.460	6073.23	
37	0.00	28.909	2.000	72.060	148	1031.64	5.460	6244.77	
38	0.00	29.657	2.000	73.960	152	1059.84	5.460	6416.31	
39	0.00	30.405	2.000	75.860	156	1088.04	5.460	6587.85	
40	0.00	31.153	2.000	77.760	160	1116.24	5.460	6759.39	
41	0.00	31.901	2.000	79.660	164	1144.44	5.460	6930.93	
42	0.00	32.649	2.						

DOE									
DOE	IP (W/m ²)	U ₁₃	BRCH	PROCH	DOE	IP (W/m ²)	U ₁₃	BRCH	PROCH
1	0.00	1.981	2.000	3.660	4	16.44	5.460	83.15	
2	0.00	2.729	2.000	5.560	8	44.64	5.460	240.87	
3	0.00	3.477	2.000	7.460	12	72.84	5.460	412.41	
4	0.00	4.225	2.000	9.360	16	101.04	5.460	583.95	
5	0.00	4.973	2.000	11.260	20	129.24	5.460	755.49	
6	0.00	5.721	2.000	13.160	24	157.44	5.460	927.03	
7	0.00	6.469	2.000	15.060	28	185.64	5.460	1098.57	
8	0.00	7.217	2.000	16.960	32	213.84	5.460	1270.11	
9	0.00	7.965	2.000	18.860	36	242.04	5.460	1441.65	
10	0.00	8.713	2.000	20.760	40	270.24	5.460	1613.19	
11	0.00	9.461	2.000	22.660	44	298.44	5.460	1784.73	
12	0.00	10.209	2.000	24.560	48	326.64	5.460	1956.27	
13	0.00	10.957	2.000	26.460	52	354.84	5.460	2127.81	
14	0.00	11.705	2.000	28.360	56	383.04	5.460	2299.35	
15	0.00	12.453	2.000	30.260	60	411.24	5.460	2470.89	
16	0.00	13.201	2.000	32.160	64	439.44	5.460	2642.43	
17	0.00	13.949	2.000	34.060	68	467.64	5.460	2813.97	
18	0.00	14.697	2.000	35.960	72	495.84	5.460	2985.51	
19	0.00	15.445	2.000	37.860	76	524.04	5.460	3157.05	
20	0.00	16.193	2.000	39.760	80	552.24	5.460	3328.59	
21	0.00	16.941	2.000	41.660	84	580.44	5.460	3500.13	
22	0.00	17.689	2.000	43.560	88	608.64	5.460	3671.67	
23	0.00	18.437	2.000	45.460	92	636.84	5.460	3843.21	
24	0.00	19.185	2.000	47.360	96	665.04	5.460	4014.75	
25	0.00	19.933	2.000	49.260	100	693.24	5.460	4186.29	
26	0.00	20.681	2.000	51.160	104	721.44	5.460	4357.83	
27	0.00	21.429	2.000	53.060	108	749.64	5.460	4529.37	
28	0.00	22.177	2.000	54.960	112	777.84	5.460	4700.91	
29	0.00	22.925	2.000	56.860	116	806.04	5.460	4872.45	
30	0.00	23.673	2.000	58.760	120	834.24	5.460	5043.99	
31	0.00	24.421	2.000	60.660	124	862.44	5.460	5215.53	
32	0.00	25.169	2.000	62.560	128	890.64	5.460	5387.07	
33	0.00	25.917	2.000	64.460	132	918.84	5.460	5558.61	
34	0.00	26.665	2.000	66.360	136	947.04	5.460	5730.15	
35	0.00	27.413	2.000	68.260	140	975.24	5.460	5901.69	
36	0.00	28.161	2.000	70.160	144	1003.44	5.460	6073.23	
37	0.00	28.909	2.000	72.060	148	1031.64	5.460	6244.77	
38	0.00	29.657	2.000	73.960	152	1059.84	5.460	6416.31	
39	0.00	30.405	2.000	75.860	156	1088.04	5.460	6587.85	
40	0.00	31.153	2.000	77.760	160	1116.24	5.460	6759.39	
41	0.00	31.901	2.000	79.660	164	1144.44	5.460	6930.93	
42	0.00	32.649	2.						

DOE									
DOE	IP (W/m ²)	U ₁₃	BRCH	PROCH	DOE	IP (W/m ²)	U ₁₃	BRCH	PROCH
1	0.00	1.981	2.000	3.660	4	16.44	5.460	83.15	
2	0.00	2.729	2.000	5.560	8	44.64	5.460	240.87	
3	0.00	3.477	2.000	7.460	12	72.84	5.460	412.41	
4	0.00	4.225	2.000	9.360	16	101.04	5.460	583.95	
5	0.00	4.973	2.000	11.260	20	129.24	5.460	755.49	
6	0.00	5.721	2.000	13.160	24	157.44	5.460	927.03	
7	0.00	6.469	2.000	15.060	28	185.64	5.460	1098.57	
8	0.00	7.217	2.000	16.960	32	213.84	5.460	1270.11	
9	0.00	7.965	2.000	18.860	36	242.04	5.460	1441.65	
10	0.00	8.713	2.000	20.760	40	270.24	5.460	1613.19	
11	0.00	9.461	2.000	22.660	44	298.44	5.460	1784.73	
12	0.00	10.209	2.000	24.560	48	326.64	5.460	1956.27	
13	0.00	10.957	2.000	26.460	52	354.84	5.460	2127.81	
14	0.00	11.705	2.000	28.360	56	383.04	5.460	2299.35	
15	0.00	12.453	2.000	30.260	60	411.24	5.460	2470.89	
16	0.00	13.201	2.000	32.160	64	439.44	5.460	2642.43	
17	0.00	13.949	2.000	34.060	68	467.64	5.460	2813.97	
18	0.00	14.697	2.000	35.960	72	495.84	5.460	2985.51	
19	0.00	15.445	2.000	37.860	76	524.04	5.460	3157.05	
20	0.00	16.193	2.000	39.760	80	552.24	5.460	3328.59	
21	0.00	16.941	2.000	41.660	84	580.44	5.460	3500.13	
22	0.00	17.689	2.000	43.560	88	608.64	5.460	3671.67	
23	0.00	18.437	2.000	45.460	92	636.84	5.460	3843.21	
24	0.00	19.185	2.000	47.360	96	665.04	5.460	4014.75	
25	0.00	19.933	2.000	49.260	100	693.24	5.460	4186.29	
26	0.00	20.681	2.000	51.160	104	721.44	5.460	4357.83	
27	0.00	21.429	2.000	53.060	108	749.64	5.460	4529.37	
28	0.00	22.177	2.000	54.960	112	777.84	5.460	4700.91	
29	0.00	22.925	2.000	56.860	116	806.04	5.460	4872.45	
30	0.00	23.673	2.000	58.760	120	834.24	5.460	5043.99	
31	0.00	24.421	2.000	60.660	124	862.44	5.460	5215.53	
32	0.00	25.169	2.000	62.560	128	890.64	5.460	5387.07	
33	0.00	25.917	2.000	64.460	132	918.84	5.460	5558.61	
34	0.00	26.665	2.000	66.360	136	947.04	5.460	5730.15	
35	0.00	27.413	2.000	68.260	140	975.24	5.460	5901.69	
36	0.00	28.161	2.000	70.160	144	1003.44	5.460	6073.23	
37	0.00	28.909	2.000	72.060	148	1031.64	5.460	6244.77	
38	0.00	29.657	2.000	73.960	152	1059.84	5.460	6416.31	
39	0.00	30.405	2.000	75.860	156	1088.04	5.460	6587.85	
40	0.00	31.153	2.000	77.760	160	1116.24	5.460	6759.39	
41	0.00	31.901	2.000	79.660	164	1144.44	5.460	6930.93	
42	0.00	32.649	2.	</					

Poř.	Ks	Ø	Jednot. dílna [m]	Tvar prúta s popisom (bez misky)	Celková dĺžka [m]	Hmotnosť [kg]
19	72	14	3.14		226.08	273.56
20	16	12	8.76		140.16	124.46
21	18	8	1.72		30.96	12.23
22	18	8	1.72		30.96	12.23
23	21	10	2.00		42.00	25.91
24	21	10	1.00		21.00	12.96
25	300	16	0.33		115.50	162.49
26	525	16	0.36		189.00	298.62
					Celková hmotnosť [kg]: 542.46	

Siete - tvary - dobetonávka + N1

Poz.	Ks	Ozvađenje sieti	Tvor sa rozmerni (na koje je mjesto)	Džaka [m]	Širina [m]	Hmotnost [kg]
1	4	KY 50	200	1.930	2.000	83.15
2	8	KY 50	200	2.790	2.000	240.67
3	4	KY 50	200	1.250	2.000	53.84
4	4	KY 50	200	3.000	2.000	129.60
5	6	KY 50	200	3.000	2.000	194.21
6	1	KY 50	200	1.950	2.000	21.04
7	2	KY 50	200	2.840	2.000	61.36
8	1	KY 50	106	0.920	1.060	5.29
9	1	KY 50	200	1.950	2.000	21.04
10	1	KY 50	106	0.920	1.060	5.29
11	1	KY 50	200	2.560	2.000	27.61
12	1	KY 50	81	0.650	0.810	2.85
13	1	KY 50	104	1.540	1.640	13.60
14	1	KY 50	200	2.560	2.000	27.61
15	1	KY 50	81	0.650	0.810	2.85
16	1	KY 50	104	1.540	1.640	13.60

POZNÁMKY:
- VŠETKY POUŽITÉ SKLADBY, A ASFALTOVÉ KRYTY, REALIZOVAŤ PODĽA
TECHNOLÓGICKÝCH PREPISOV A ODPORÚČANÍ ICH VÝROBCOV

VÝSTUŽ B 500B (R)
KRYTIE 35 mm

KONŠTRUKČNÁ OCEĽ S235J2G3
KARI SIEŤ KZ60 100x100x10, KY50 150x150x8

BETÓN:
- 20 R15A C35/45 YC4 YD3 YE4(SK) C10.4 D_{max}16 S4

- DOBETONÁVKA C35/45 XC4, XD1, XF2(SK), Cl-0,4, Dmax16, S3
 - ZÁVERNÝ MŮRIK C30/37 XC4, XD1, XF2(SK), Cl-0,4, Dmax16, S3
 - PŘECHODOVÁ DOSKA C30/37 XC4, XD1, XF2(SK), Cl-0,4, Dmax16, S3

- NOSNIK N1, N2 C30/37 XC4, XD1, XF2(SK), CI-0,4, Dmax16, S3
- SPODNÁ STAVBA C25/30 XC2, XD1, XF2(SK), CI-0,4, Dmax22, S3
- PODKLADNÝ BETÓN C12/15 X0 (SK), CI-0,4, Dmax22, S3

Hlavný inžinier projektu	Autorizovaný Ing.	Vypracoval:	Objednávka
Ing. Peter Mareš	Ing. Peter Mareš	Ing. Juraj Ondřík	Baničkovce Námestie SNP

Názov stavby: **BR - 1 KALINKA** - s. x. 0400-0

Most KALINKA , ev.c. 2463-8
Názov súboru projektov :
Rekonštrukcia a obnova mostov na cestách III. triedy BBSK.

Obsah výkresu : Výkres výstuže - Most Kalinka ev.č. 2463-8 (časť 1)
MARETTA projekt, Ľatliakova 1, 026 01 Dolný Kubín
